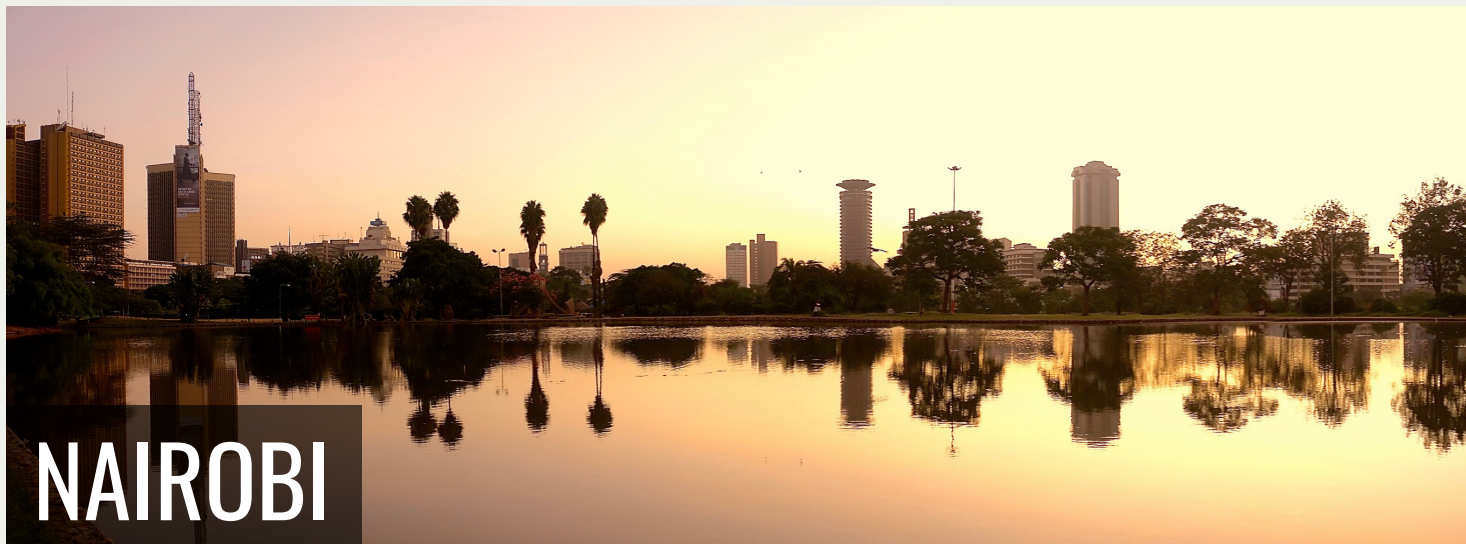


Kenya Safari 11 Nights / 12 Days

MARK
HAMILTON
QUINN



NAIROBI



SAMBURU NATIONAL RESERVE



OL PEJETA CONSERVANCY

**MARK
HAMILTON
QUINN**



NAKURU



MASAI MARA

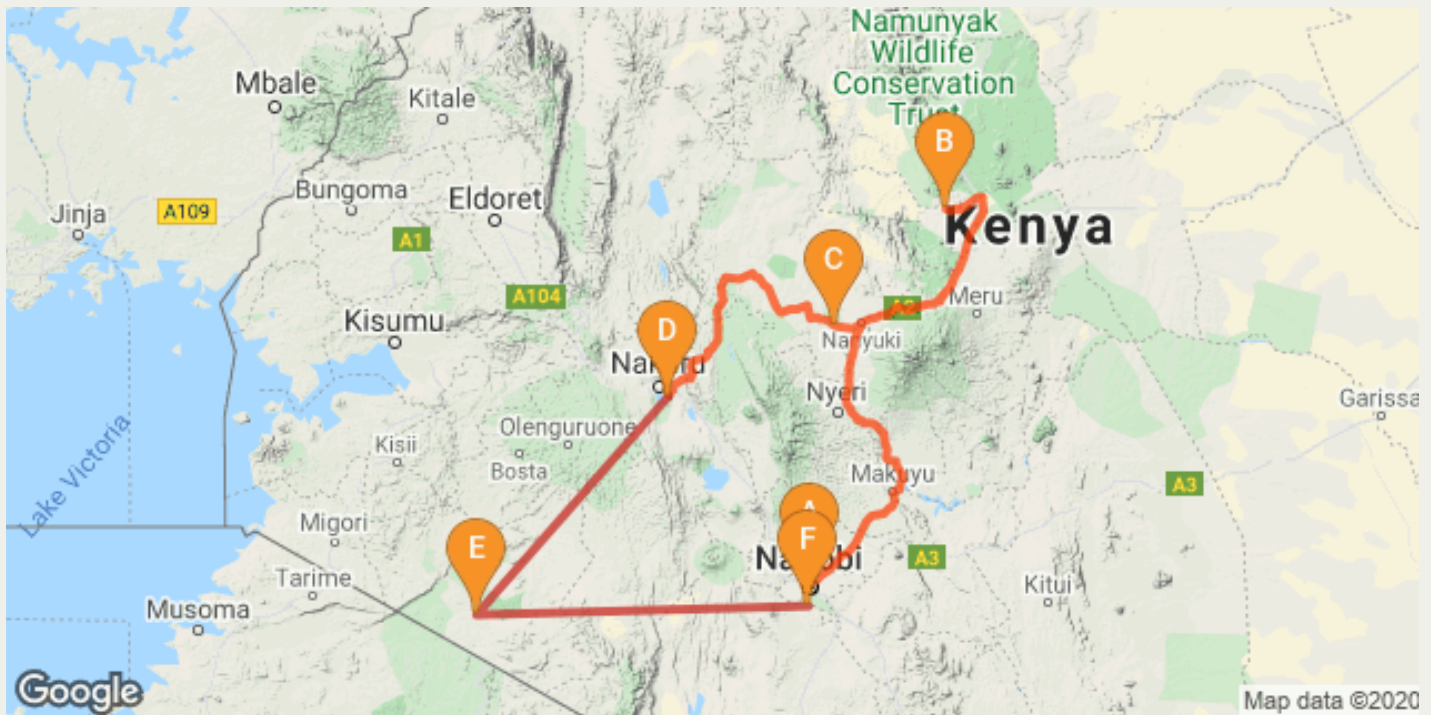


NAIROBI NATIONAL PARK

**Nairobi - Samburu National Reserve - Ol Pejeta Conservancy
- Nakuru - Masai Mara - Nairobi National Park**

**12 Days / 11 Nights
3 Persons**

Reference: HAMILTON QUINN PTY3



[Click here to view your Digital Itinerary.](#)

Introduction

Kenya offers seemingly endless opportunities for an adventure. Ever watched National Geographic and seen acres and acres of savannah lands? Ever wondered how the lions, wild beasts, crocodiles and zebras live in the same vicinity? Well if you wish to have the first-hand experience of this scenario, a visit to Masai Mara National Reserve is imperative. Stretched along the Tanzanian border adjacent to the Serengeti, Masai Mara National Reserve is one of Kenya's oldest and most beloved safari destinations—an expanse of nearly 600 square miles where the event of the wildebeest migration is something you wouldn't want to miss. Experience the culture, the biodiversity, and the local nomadic tribes. Experience the Unknown only in Kenya.

Accommodation	Type	Destination	Basis	Room Type	Duration
The Concord Hotel & Suites		Nairobi	B&B	2x Standard	2 Nights
Samburu Intrepids Tented Camp		Samburu National Reserve	FB+	2x Standard	3 Nights
Sweetwaters Serena Camp		Ol Pejeta Conservancy	FB+	2x Standard	1 Night
Sarova Lion Hill Game Lodge		Nakuru	FB+	2x Standard	1 Night
Julia's River Camp		Masai Mara	FB+	2x Standard	3 Nights
Masai Lodge		Nairobi National Park	B&B	2x Standard	1 Night

Key

B&B: Bed and Breakfast

FB+: Full Board Plus - Dinner, Bed, Breakfast, Lunch and Activities

Price

If 2 People Join Mark : \$6,550.00 Per Person

If 3 People Join Mark: \$6,020.00 Per Person

If 4 People Join Mark: \$5,760.00 Per Person

If 5 People Join Mark: \$5,605.00 Per Person

If 6 People Join Mark: \$5,495.00 Per Person

Included

- Meet and greet services at the airport
- Full board accommodation
- Daily private Game Drives in a 4 x 4 Land Cruiser Vehicle
- Professional Driver Guides
- Visit to the Maasai Village (Entrance at an extra fee)
- Airport Transfer
- Conservancy & Park Fees
- Local Flights to Mara and back to Nairobi

Excluded

- International Flights**
- Gratuities to lodge staff or drivers**
- International Visa**
- Anything not mentioned on the Included**



Day 1: The Concord Hotel & Suites, Nairobi

Nairobi

Situated in along the Nairobi River in beautiful Kenya, the capital of Nairobi is East Africa's most cosmopolitan city. It serves as an excellent starting point for African safari trips around Kenya. Nairobi is Africa's 4th largest city and is a vibrant and exciting place, and although it has developed a reputation which keeps tourist visits brief, there are some fascinating attractions: its cafe culture, unbridled nightlife, the National Museum, the Karen Blixen Museum and most notably just 20 minutes from the city centre wild lions and buffalo roam in the world's only urban game reserve. Make sure you pay a visit to the elephant orphanage operated by the David Sheldrick Wildlife Trust.

Day Itinerary

Atlanta / Amsterdam

Depart aboard KLM Royal Dutch/Northwest Airlines flight to Amsterdam. Enjoy traditionally fine hospitality this evening. (Meals onboard)

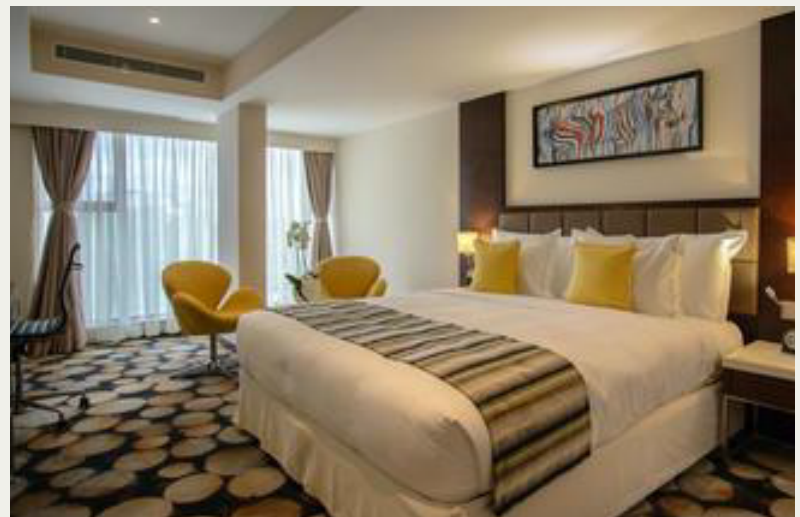
Overnight: The Concord Hotel & Suites

The Concord is strategically located on Wangapala Road in Nairobi Kenya. The hotel offers 86 lavish rooms ranging from the superior room to the penthouse. All rooms include free Wi-Fi access, a TV, air conditioning, an in room safe, bathrobes, a minibar and an alarm clock.

Hotel facilities include a spa treatment room, a bar/lounge, an in-house restaurant, gym, outdoor heated pool, a pool bar and a day spa. Guests can also enjoy some local shopping as the hotel is within walking distance of The Diamond Plaza Shopping Centre.

Basis

Bed and Breakfast



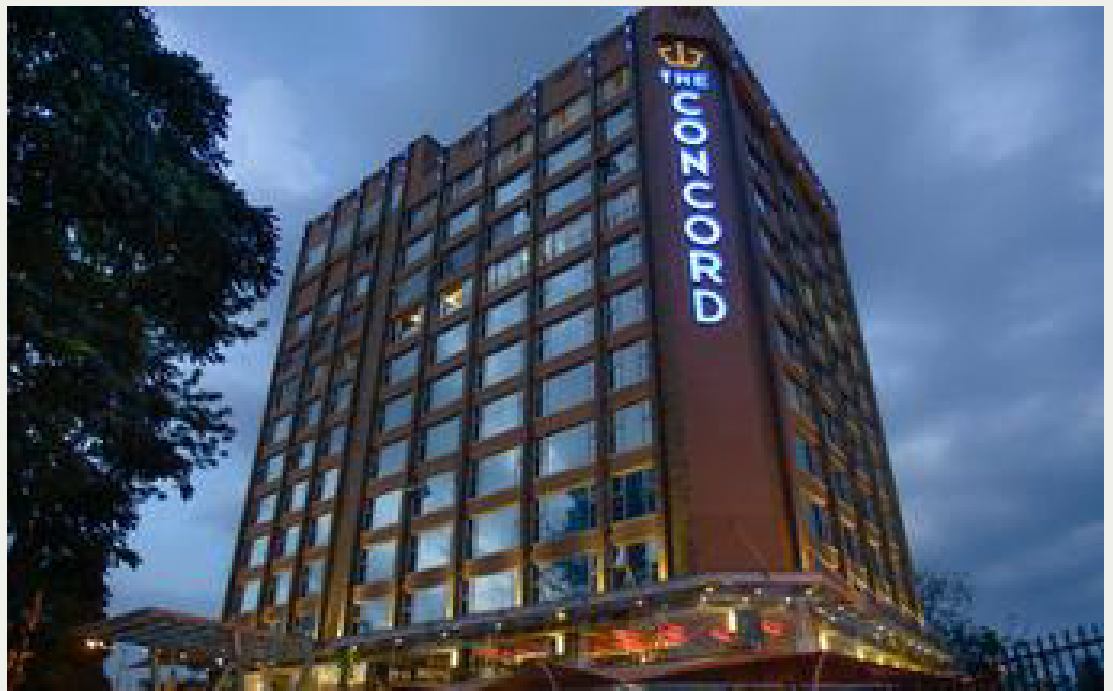
Day 2: The Concord Hotel & Suites, Nairobi

Day Itinerary

Amsterdam / Nairobi Early morning arrival at Amsterdam Schiphol International Airport. You have a few hours between flights to check out the duty-free shops. Then enjoy the daylight flight on KLM Royal Dutch Airlines to Nairobi. Upon arrival clear customs and meet your driver and transfer to your Lodge/Camp for relaxation and overnight.

Basis

Bed and Breakfast



Day 3: Samburu Intrepids Tented Camp, Samburu National Reserve

Samburu National Reserve

Resting on the banks of the Ewaso Ng'iro River and neighbouring the Buffalo Springs National Park, Samburu National Reserve is remote, hot and arid. The reserve spans over 165 square kilometres of spectacularly scenic landscape featuring rugged hills, undulating plains and riverine forests. The park is home to abundant wildlife including a variety of rare species such as the reticulated giraffe, the long necked gerenuk, Somali ostrich, Grevy's Zebra and Beisa Oryx. Samburu was one of the homes of 'Elsa the Lioness', star of the best selling book and award-winning movie 'Born Free'. Visitors can enjoy viewing over 900 elephants, a variety of predators, and over 450 bird species.

Day Itinerary

After Breakfast get transferred to David Sheldrick Elephant Orphanage.

David Sheldrick Elephant Orphanage - Get up close and personal with the orphaned elephant (and often rhino). This is where Daphne Sheldrick has perfected the raising and reintegrating of orphaned elephants into the wild.

Later get transferred to Samburu

Nairobi to Samburu National Park: 6 h 14 min (332.2 km)

Depart by road to Samburu National Park. A Reserve located at the North rugged Semi desert region.

Samburu Game Reserve is a wild and little-visited region, well known for spectacular scenery and wildlife not found in the south: Reticulated Giraffe, the rare Grevy's Zebra with its large furry ears, the gerenuk Antelope standing on its hind legs to feed and Somali Ostriches with their distinctive blue legs.

Lunch upon arrival at your lodge or Camp then proceeds on a 'Spice' game drive.

After lunch an afternoon game drive is also planned. In addition to elephant, antelope, zebra, wildebeest, buffalo and the rare black rhino, nearly every vista within the park.

Day 3: Samburu Intrepids Tented Camp, Samburu National Reserve

Overnight: Samburu Intrepids Tented Camp

Dry, rugged and stunning, Samburu's landscape is at once stark and sensual, with its iconic loaf shaped Lolokowe Mountain and hills spreading in every horizon. Its life lung is the Usao Nyiro River coursing through its craggy terrain full of stone, thorn bush and the forked doum palms. In this arid zone where water is scarce and the land baked by the eternal sun, herds of elephants and the big cats roam the plains with the Samburu special - the Reticulated giraffe, Grevy's zebra, Beisa oryx, Somali ostrich and the long necked antelope, the gerenuk easily seen despite its harsh climes.

Located 345 kilometres north of Nairobi, the journey to the camp involves a 50-minute flight to the Samburu airstrip followed by a 20-minute drive through the reserve.



Day 4: Samburu Intrepids Tented Camp, Samburu National Reserve

Day Itinerary

Full day in Samburu with morning and afternoon game drives. You may see Elephants, Cheetah, Leopard, Eland, Oryx, Impala, Dikdik, Waterbuck, and a variety of birds. This lava plain includes a varied landscape of red dirt, thorn scrub, broken volcanic rock, dried riverbeds, steep hills, and rocky outcroppings. Following the river's curves, a forest of Doum Palms, Acacia, and tamarind is a magical contrast of cool green. Other areas of the Reserve include the Uaso Nyiro River where crocodiles sunbathe themselves on the banks. It also provides an oasis for a variety of games. Birds are abundant, with 365 species recorded, one for every day of the year. In between the game drives, there is an opportunity to visit a Samburu village at an additional cost.

Basis

Full Board Plus - Dinner, Bed, Breakfast, Lunch and Activities



Day 5: Samburu Intrepids Tented Camp, Samburu National Reserve

Day Itinerary

Full day in Samburu with morning and afternoon game drives. You may see Elephants, Cheetah, Leopard, Eland, Oryx, Impala, Dikdik, Waterbuck, and a variety of birds. This lava plain includes a varied landscape of red dirt, thorn scrub, broken volcanic rock, dried riverbeds, steep hills, and rocky outcroppings. Following the river's curves, a forest of Doum Palms, Acacia, and tamarind is a magical contrast of cool green. Other areas of the Reserve include the Uaso Nyiro River where crocodiles sunbathe themselves on the banks. It also provides an oasis for a variety of games. Birds are abundant, with 365 species recorded, one for every day of the year. In between the game drives, there is an opportunity to visit a Samburu village at an additional cost.

Basis

Full Board Plus - Dinner, Bed, Breakfast, Lunch and Activities



Day 6: Sweetwaters Serena Camp, Ol Pejeta Conservancy

Ol Pejeta Conservancy

Resting at the foothills of Mount Kenya and the Aberdare Mountain Range, in central Kenya's Laikipia County, the Ol Pejeta Conservancy is the largest black rhino sanctuary in East Africa. It is also home to the last three remaining northern white rhino in the world. Originally a working cattle ranch in colonial Kenya and now a pioneering wildlife conservancy, Ol Pejeta works to protect wildlife and provide a sanctuary for rescued chimpanzees. The Conservancy is a popular safari destination and is home to the renowned 'Big Five' as well as a wide selection of other African animals including: zebra, giraffe, hippo, cheetah, jackal, serval, hyena, vervet monkey and many more. Visitors can enjoy an assortment of outdoor activities such as horse rides, game walks, and nocturnal game drives.

Day Itinerary

Breakfast at the Lodge/Camp, check out and depart to the Ol-Pejeta Conservancy. Arrive at your lodge. Check-in followed by lunch. In the afternoon enjoy an exciting game drive in the conservancy.

Today, Ol Pejeta is the largest black rhino sanctuary in east Africa, and home to two of the world's last remaining northern white rhino. It is the only place in Kenya to see chimpanzees, in a Sanctuary established to rehabilitate animals rescued from the black market. It has some of the highest predator densities in Kenya, and still manages a very successful livestock programme. Ol Pejeta also seeks to support the people living around its borders, to ensure wildlife conservation translates to better education, healthcare and infrastructure for the next generation of wildlife guardians.

Day 6: Sweetwaters Serena Camp, Ol Pejeta Conservancy

Overnight: Sweetwaters Serena Camp

A sheltered oasis, clustered around a water hole and set in the pristine calm of the private Ol Pejeta Conservancy, Sweetwaters Tented Camp offers a charming blend of under-canvas ambiance and safari luxury.

Located on the plains of Mount Kenya, the camp features thirty-nine luxury tents, each with its own private veranda overlooking the water hole. The central Rhino Restaurant is housed in the former manager's house of this once colonial farm, and offers both regional and international cuisine. Also within the house is the Kashoggi Bar and lounge, which centres on a blazing log fire. The Waterhole Bar, built in the style of a game-viewing hide, overlooks the waterhole and offers unrivalled wildlife-watching.

Basis

Full Board Plus - Dinner, Bed, Breakfast, Lunch and Activities



Day 7: Sarova Lion Hill Game Lodge, Nakuru

Nakuru

Nakuru is a city on the shores of western Kenya's Lake Nakuru, within a reserve that sprawls across almost 200 square kilometres. It is the capital of Nakuru County, located in the Great Rift Valley. Ten kilometres from town lies the massive Menengai Crater. A hiking trail leads up to the rim of this ancient caldera, offering bird's eye views over the lake and surrounds then plunges 400 metres down to the floor below, where you will find ancient forests. Lake Nakuru National Park, surrounding Nakuru, is home to exceptional birdlife, as well as over 50 varieties of mammals. These include lion, leopard, buffalo, zebra, giraffe, rhino, antelope and various primates.

Day Itinerary

After breakfast, leave the Mount Kenya area and travel by way of Nyahururu Falls to Lake Nakuru National Park arrive at your Lodge/ Camp for lunch.

The Park is famous for over 360 species of birds and is a sanctuary for the rare white rhino. Millions of pink flamingos ring the lake shore, and there is an excellent population of buffalo and water-buck. This Park is also a sanctuary for Rothschild's giraffe, eland, lion and leopard. Enjoy dinner and overnight at the lodge. B/L/D



Day 7: Sarova Lion Hill Game Lodge, Nakuru

Overnight: Sarova Lion Hill Game Lodge

Sarova Lion Hill Game Lodge is nestled along the Lion Hill overlooking the spectacular flamingo pink rimmed Lake Nakuru. Its location affords panoramic views of the lake and the picturesque Lake Nakuru National Park. A short two-hour drive from Nairobi, Sarova Lion Hill Game Lodge is a favourite with residents and visitors to Kenya.

Sarova Lion Hill Game Lodge is cleverly laid out in such a way that most rooms and sitting areas afford stunning views of the lake and the park. The Lodge incorporates natural landscaping with tall acacia trees, winding walkways and greens dotted with bird feeds. The Lodge is a natural haven for bird life and attracts over 50 species of birds amongst the 400 species that inhabit the Park.

Lake Nakuru National Park was created in 1968 to protect the huge flocks of over of the lesser flamingo that breed and nest at the edge of Lake Nakuru, giving it the characteristic pink rim. Lake Nakuru National Park, located at an altitude of 4,000-5,767 feet above sea level, covers 188 square kilometres of land of great ecological diversity - from lake water, woodland, bush grassland, to rocky ridges. The park is home to not just the lesser flamingo but over 400 species of birds and one of the few places to see the endangered white rhino. Other wildlife at the park includes lions, leopards, zebra, gazelles, eland, giraffe and the hyrax.

Basis

Full Board Plus - Dinner, Bed, Breakfast, Lunch and Activities

Day 8: Julia's River Camp, Masai Mara

Masai Mara

The Masai Mara together with Tanzania's Serengeti form Africa's most famous wildlife park, the Masai Mara National Reserve. The image of acacia trees dotting endless grass plains epitomises Africa for many, then add a Maasai warrior and some cattle to the picture and the conversation need go no further. The undeniable highlight of the Masai Mara National Reserve is undoubtedly the annual wildebeest migration traversing the vast plains of the Serengeti and the Masai Mara. It is known as the largest mass movement of land mammals on the planet – with more than a million animals following the rains. Large prides of lions, elephants, giraffes, gazelles and eland can also be spotted in the reserve. Aside from horse riding safaris and traditional vehicle safaris, hot-air ballooning over the Mara plains has become almost essential.

Day Itinerary

After breakfast drive to the Naivasha Airstrip for your flight to the Masai Mara Game Reserve, arriving at the Lodge/ Camp in time for a late lunch.

After lunch, enjoy a PM game drive within the park. The Mara offers wildlife in such variety and abundance that it is difficult to believe; over 450 species of animals have been recorded here. You might see lions, Rhinos, Hippos, Crocodiles, Giraffe, Wildebeests, Zebras, Buffalo, Warthogs, Hyenas, and jackals, Wild dogs, Buffalo, Leopard and a variety of antelopes. It is in the Mara that the most spectacular event of the natural wonders of the world takes place. Behind their heels are predators of the savannah. This evening, enjoy a sumptuous dinner at your camp.

Day 8: Julia's River Camp, Masai Mara



Overnight: Julia's River Camp

Hidden on a sleepy bend of the Talek River, in the midst of the Masai Mara's endless savannah, our exclusive tented camp, opened in 2012, is the perfect place to start your safari adventures! Its privileged location guarantees that we see and hear lots of wildlife without even leaving the camp... lions, hippos, wildebeest, elephants and even leopard have visited!

Basis

Full Board Plus - Dinner, Bed, Breakfast, Lunch and Activities

Day 9: Julia's River Camp, Masai Mara

Day Itinerary

Masai Mara Game Reserve These days are filled with activities as you enjoy morning and afternoon game drives with your experienced and professional guides. The great expanse of Africa stretches away across the beautiful plains of the Masai Mara – one of the most life-filled wildlife sanctuaries on earth. And here the wildlife is varied and plentiful as you observe herds of gazelles, impala, and wildebeest as well as a variety of other antelope species such as topi and hartebeest. Large prides of lion may be seen as well as cheetah on the open plains and leopard in the shady riverine areas. Elephant and buffalo are numerous and you will return to camp each day exhilarated by the wealth of wildlife that you have observed. Here also the birdlife is spectacular and you may identify weavers, rollers, egrets, herons, horn bills, storks and a variety of raptors. Return to your splendid camp for meals and for each overnight. B/L/D

Basis

Full Board Plus - Dinner, Bed, Breakfast, Lunch and Activities



Day 10: Julia's River Camp, Masai Mara



Day Itinerary

Masai Mara Game Reserve These days are filled with activities as you enjoy morning and afternoon game drives with your experienced and professional guides. The great expanse of Africa stretches away across the beautiful plains of the Masai Mara – one of the most life-filled wildlife sanctuaries on earth. And here the wildlife is varied and plentiful as you observe herds of gazelles, impala, and wildebeest as well as a variety of other antelope species such as topi and hartebeest. Large prides of lion may be seen as well as cheetah on the open plains and leopard in the shady riverine areas. Elephant and buffalo are numerous and you will return to camp each day exhilarated by the wealth of wildlife that you have observed. Here also the bird life is spectacular and you may identify weavers, rollers, egrets, herons, hornbills, storks and a variety of raptors. Return to your splendid camp for meals and for each overnight. B/L/D

Basis

Full Board Plus - Dinner, Bed, Breakfast, Lunch and Activities

Day 11: Masai Lodge, Nairobi National Park

Nairobi National Park

Bordering the capital city of Nairobi, in beautiful Kenya, Nairobi National Park is one of Africa's smallest parks and one of the only parks on earth to be in such close proximity to a city centre. It boasts a large and varied wildlife population, amid wide open grass plains against a backdrop of city scrapers. It is home to one of Kenya's most successful rhinoceros sanctuaries with the world's highest concentration of black rhinoceros. It's wetland areas are abundant with birdlife boasting over 400 bird species. Visitors can enjoy the many facilities the park has to offer such as scenic picnic sites, well-positioned campsites and hiking trails. Commonly spotted species include: lion, hyena, warthog, zebra, giraffe, ostrich, gazelle, buffalo, and sometimes if you're lucky, leopard and cheetah.

Day Itinerary

Masai Mara Game Reserve / Nairobi / Amsterdam Return to Nairobi by charter flight where day-rooms have been reserved at your Lodge/Camp. Enjoy leisure time and then transfer to the airport where you board the KLM Royal Dutch Airlines flight to Amsterdam.



Day 11: Masai Lodge, Nairobi National Park



Overnight: Masai Lodge

This modern lodge with individually styled cottages offers a stay in style with comfort and the latest technology. The iconic site is also a paradise of gourmets with a vitality breakfast buffet offering a wide range of African Cuisines and International dishes to tantalise, in a warm and relaxed atmosphere. The restaurant features a touch of both African and International flair, where you will enjoy either a quick business meal or a lazy lunch chosen from an exquisite yet fairly priced menu.

Basis

Bed and Breakfast

Day 12: End of Itinerary

Day Itinerary

Amsterdam / Atlanta Early morning arrival in Amsterdam. Time for shopping and to stretch before you board the KLM Royal Dutch Airlines flight to Atlanta. Here you clear customs and immigration formalities before connecting onto your domestic flight for home. (Meals on board)

Basis

Bed and Breakfast

TRANSPORT

Flight Information

Date	Flight	Airline	Departure Airport	Time	Arrival Airport	Time	Class	Ref
27 Jun	Scheduled		Sarova Lion Hill Game Lodge		Julia's River Camp			
30 Jun	Scheduled		Julia's River Camp		Masai Lodge			

Transfers

Date	Company	Pick Up	Drop Off	Time	Vehicle
20 Jun		Jomo Kenyatta International Airport [NBO]	The Concord Hotel & Suites		Transfer
22 Jun		The Concord Hotel & Suites	Samburu Intrepids Tented Camp		Transfer
25 Jun		Samburu Intrepids Tented Camp	Sweetwaters Serena Camp		Transfer
26 Jun		Sweetwaters Serena Camp	Sarova Lion Hill Game Lodge		Transfer
1 Jul		Masai Lodge	Jomo Kenyatta International Airport [NBO]		Transfer

Urgent Contact Numbers

Company Name	Telephone	Email Address	Contact Person
Adventure Safaris	+1 (239) 671-7579	adventuresafaris@aol.com	
Hodari Africa Safaris Limited	254781461263	sales@hodarikenya.co.ke	Safaris Team

TRANSPORT

Service Provider Directory

Service Provider	Ref. Number	Telephone	Address
Julia's River Camp		+255 732 979 478	
Samburu Intrepids Tented Camp		+254 722 205894	
Sarova Lion Hill Game Lodge		+254 728 606584	P.O. BOX 72493 00200 NAIROBI KENYA
The Concord Hotel & Suites		+254 709 466000	31 Wangapala Rd, Nairobi, Kenya

TRAVEL INFORMATION



Resting in the magnificent Great Rift Valley and presided over by the majestic Mount Kilimanjaro, Kenya is characterised by hauntingly beautiful natural landscapes of forested hills, patchwork farms, wooded savanna and vast forests brimming with an extraordinary abundance of wildlife. The nation's diverse range of traditional African cultures is influenced by over 70 unique ethnic groups from the Maasai, Samburu, Kikuyu, and Turkana tribes to the Arabs and Indians that settled on the coast. Add to this: an exquisite tropical coastline fringed with breathtaking golden sand beaches; gorgeous coral gardens providing excellent snorkeling and diving opportunities; and a slew of lively beach resorts, and it is easy to see why so many visitors flock here from around the world to experience a truly unique African adventure in one of the world's most pristine safari destinations.

Banking and Currency

Currency

The currency of Kenya is the Kenyan Shilling (KES; symbol KSh) = 100 cents. Notes are in denominations of KSh1,000, 500, 200, 100 and 50. Coins are in denominations of KSh20, 10 and 5. Residents may import up to KES 500,000 and must declare if currencies exceeding US \$10,000. Non-residents may import local and foreign currencies without restrictions but amounts exceeding US \$10,000 must be declared.

Banking

Banking hours: Monday -Friday 09h00-15h00, and Saturdays 09h00-12h00. Banks in Mombasa and the coastal areas open and close half an hour earlier. Banks in airports tend to open earlier and close later; typical hours are 07h00-19h00.

ATMs are common especially in major tourist destinations.

Mastercard and Visa Credit Cards are widely accepted; American Express and Diners Club less so. Major hotels accept payment by credit card, as do major safari companies, travel agencies and restaurants.

Very few banks or foreign exchange bureaus accept travellers cheques; when they do, they charge high commissions.

Travel, Transport and Getting Around

Nairobi has two airports for domestic and regional flights: Jomo Kenyatta International Airport and Wilson Airport. Kenya has over 150 domestic airports and airstrips and there are daily flights to the most popular destinations. In addition to the scheduled airlines, several private charter companies operate out of Wilson Airport.

Kenya Airways, Air Kenya, Fly 540, Mombasa Air Safari, and Safarilink serve the most popular safari destinations, plus many others such as Lake Victoria.

All other types of transport are good and efficient. Quality on trains can differ depending on which 'class' you buy.

Drive on the left side of the road.

Road conditions vary, and are improving.

Food, Drink and Cuisine Advice

Meat in Kenya is generally outstandingly good, and 'nyam achoma' (barbecued meat) is ubiquitous at any major feasts or popular dining spots. Beef and chicken are readily available, but goat is the most-widely eaten among locals and certainly a must try for carnivorous visitors. Middle Eastern and Indian cuisine is also popular, as are fresh-water fish inland, and sea fish along the coast.

Drinking the tap water is not recommended as the supply is not reliable, but bottled water is available in most places. When buying bottled water, check the seal of the bottle is intact. Alternatively, bring your own reusable water bottle with a filter or use water purification tablets. Avoid ice and washed salads and fruit except in top hotels and restaurants. Milk is pasteurised and dairy products are safe for consumption. Food prepared by unlicensed vendors should be avoided at all times.

Tipping is optional. Most hotels and restaurants include a 10% service charge in the bill. If they don't, a small tip is customary for good service.

Climate and Weather

Kenya has three types of climate: temperate subtropical climate in the west and southwest highlands (where Nairobi is located), hot and humid along the coast, and hot and dry in the north and east.

Clothing and Dress Recommendations

For Nairobi and the coast: lightweight cotton and linens are advised. Warmer clothing is needed in June and July, while rainwear is advisable between March and June, and October and December.

For safari: loose-fitting and light neutral tones are recommended. If you are visiting a luxury lodge, pack a nice set of clothes for dinner is recommended.

Electricity and Plug Standards

Electrical sockets in Kenya are of the 'Type G (BS-1363)'. If your appliance's plug doesn't match the shape of these sockets, you will need a travel plug adapter in order to plug in. Travel plug adapters simply change the shape of your appliance's plug to match whatever type of socket you need to plug into. If it's crucial to be able to plug in no matter what, bring an adapter for all types.

Electrical sockets in Kenya usually supply electricity at 220-240 volts AC. If you're plugging in an appliance that was built for 220-240 volt electrical input, or an appliance that is compatible with multiple voltages, then an adapter is all you need. If your appliance isn't compatible with 220-240 volts, a voltage converter will be necessary.